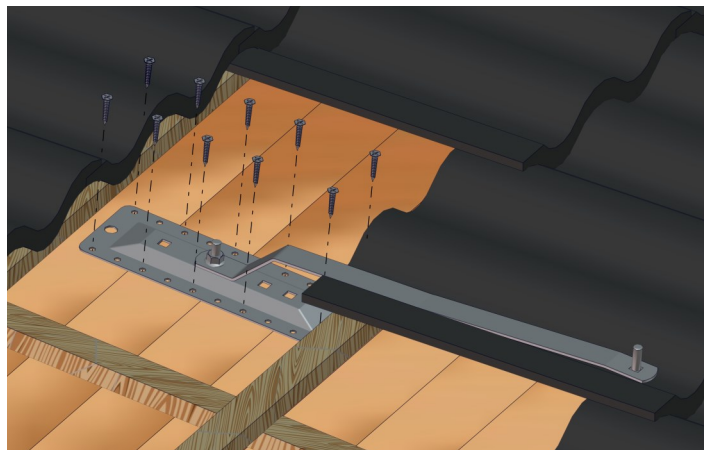
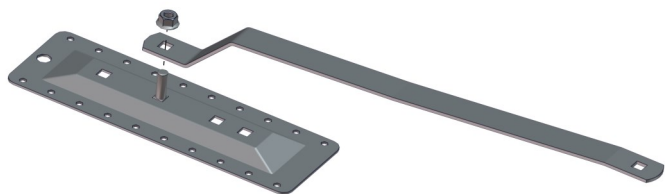


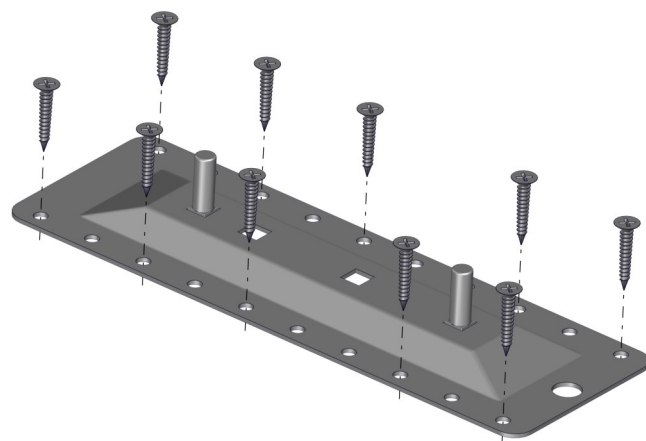
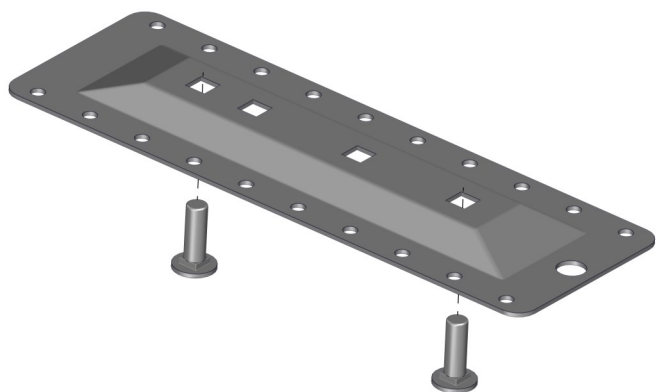
Assembly on tiled roof



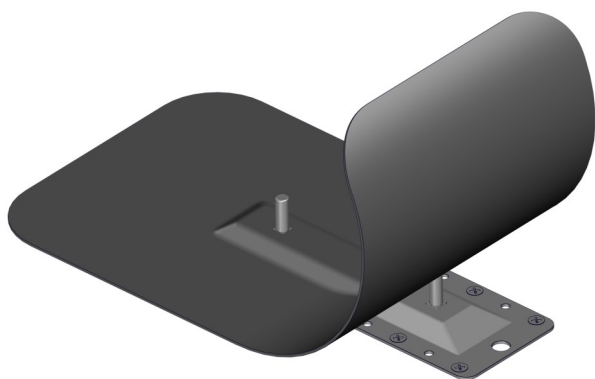
Attach the fixing iron to the base plate using coach bolt M10x30 + nuts.

Adjust the base plate and the fixing iron to the roofing tile valley and screw into place using 10 6x35 wood screws. Follow the tile manufacturer's advice on eventual notches in the tile.

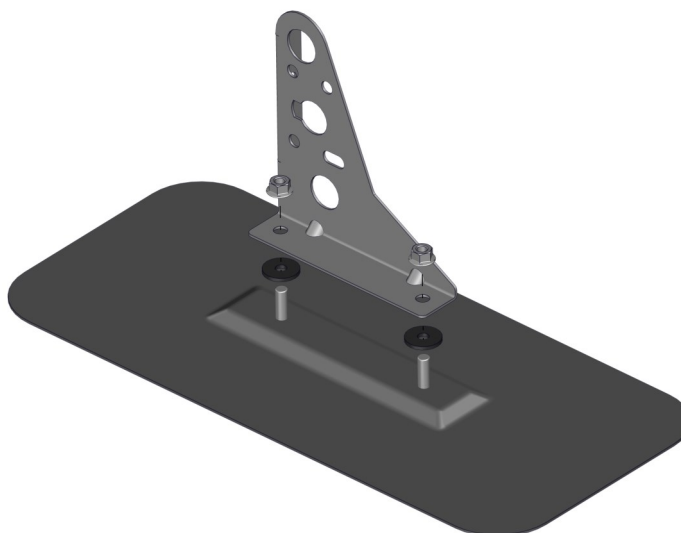
Assembly on plain roof.



Place 2 M10 coach bolts into the outer holes of the base plate before you screw it into place using 10 6x35 wood screws. **Use a screwdriver with a deep stopper base so the screw doesn't go round and lose its grip**



Place a repair patch on top and fuse together. Alternatively, use "Icopal roofing adhesive" or other suitable sealing compound.



Assemble bracket using rubber washers between the bracket and roofing-felt. Tighten using 2 M10 nuts.

Rev date 141105