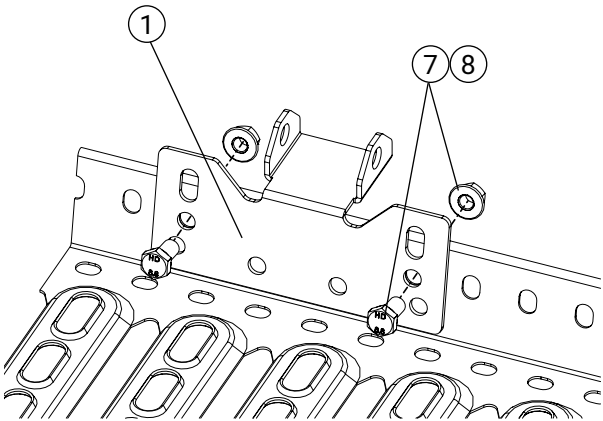


	Part	Part. no.
1	End bracket wire	WL1002
2	Wire runner open	WL1010
3	Wire bracket tube	WL1012
4	Wire joining tube	XWL1006
5	Wire clamping sleeve	XWL1014

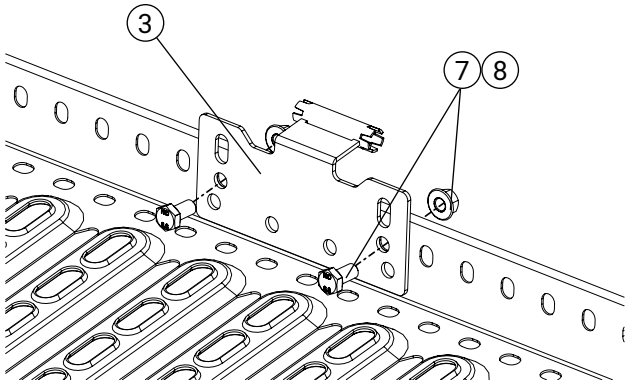
	Part	Part. no.
6	Wire	XWLXXXX
7	Bolt M10x20	BU1201/ BU1200
8	Nut M10	MU1001/ MU1010
9	Coach bolt M10x30	VB1301/ VB1305

The maximum separation between supports is 10 m up to 15 degrees pitch.
Between 15-50 degrees gradient, the max. separation is 2.5m.
Above 50 degrees gradient, the max. separation is 1.2 m.



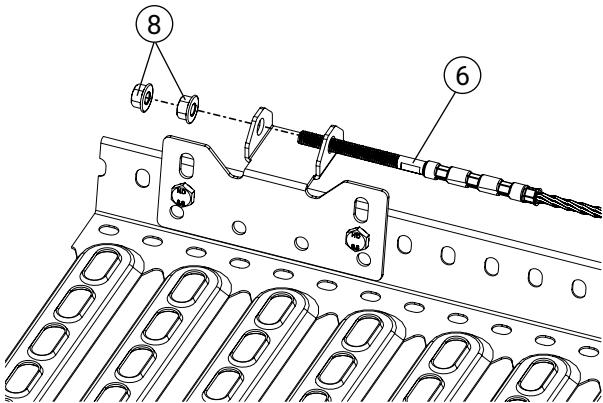
1. Brackets

Install end bracket (1) using 2 bolts + nuts (7, 8).



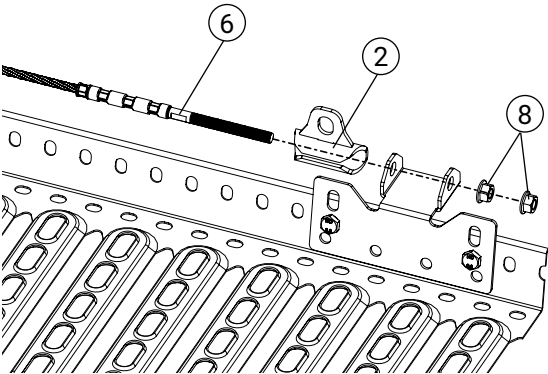
2 Support tube

Install wire support tube (3) using 2 bolts + nuts (7, 8).



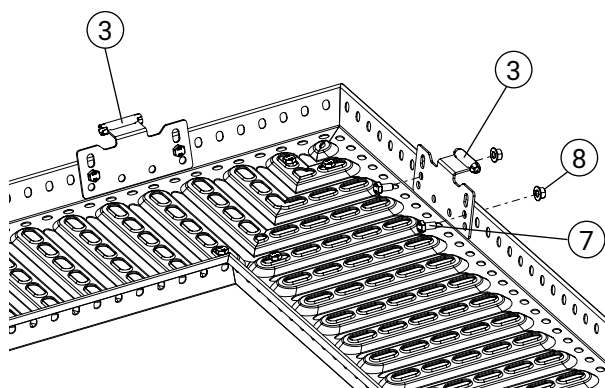
3. Wire installation

Install the first wire terminal (6). Assemble with 2 nuts (8)
Secure by tightening the other nut (8). Route the wire through any support.

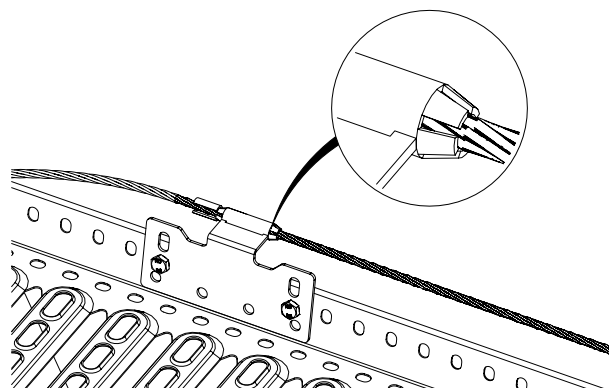


4. Wire installation

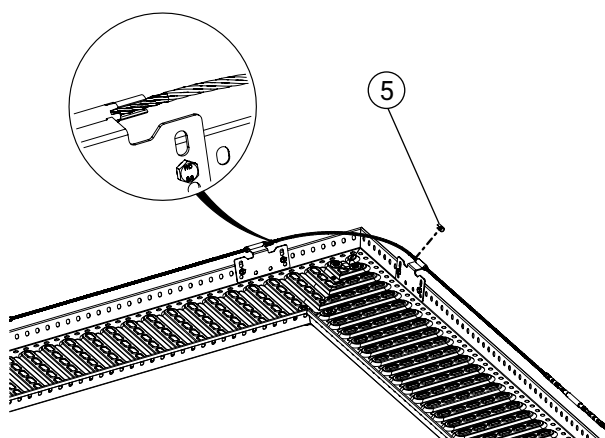
Install the last wire terminal (6). Thread on any wire runner (2). Tension the wire so it does not sag.
Secure by tightening the other nut (8).

**5. Wire corner**

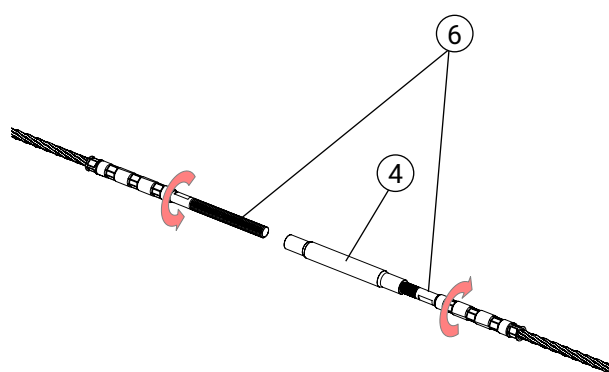
Install wire bracket tube (3) using 2 bolts + nuts (7, 8). Make a uniform hoop of the wire, so the runner runs freely.

**6. Shrinking**

Shrink the ends on wire bracket tube with tongs to attach the wire.

**7. Wire corner**

The sleeves (5) are pressed against the bracket, so the wire keeps its shape. Make the pinch using a press or with large tongs.

**8. Wire joint**

Screw in the wire terminals (6) to the centre, so they meet in the wire joining tube (4). Tighten so the terminals lock against each other.