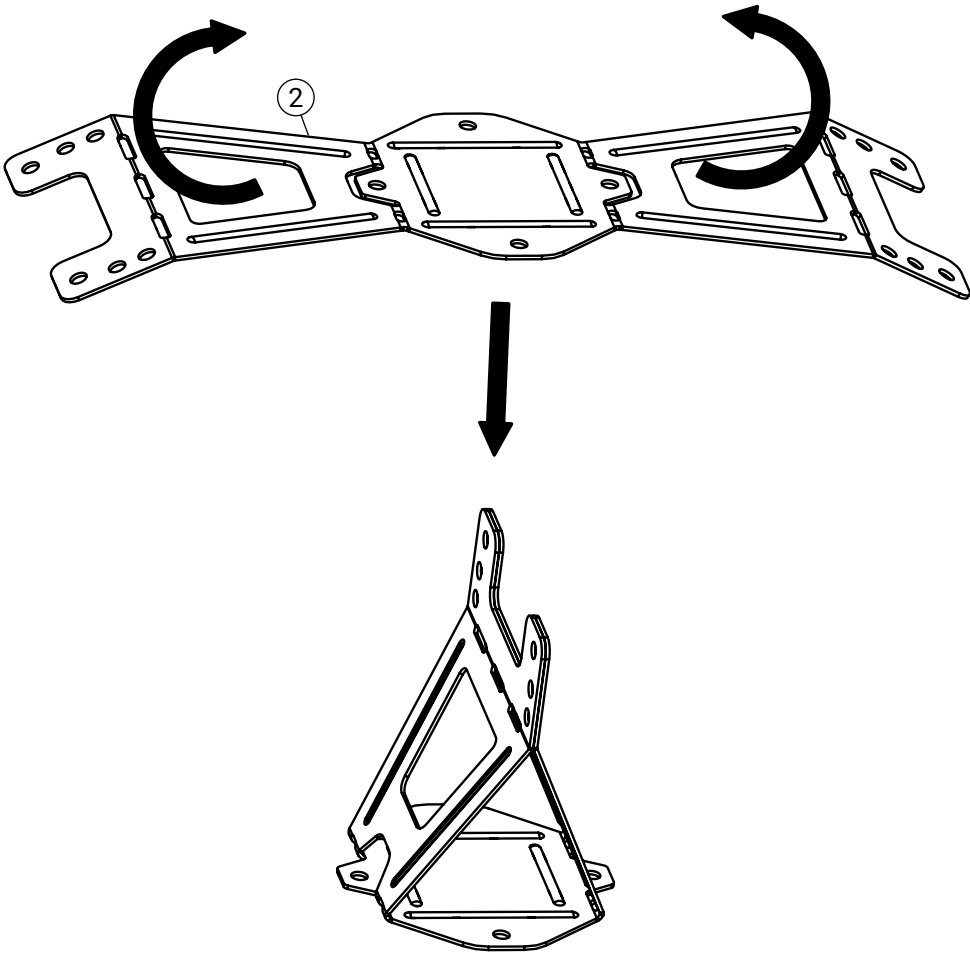


	Detalj	Art.nr.
1	End bracket wire	WL1002
2	Bracket plain roof	WL1020
3	Wire runner open	WL1010
4	Wire bracket tube	WL1012
5	Wire joining tube	XWL1006
6	Wire clamping sleeve	XWL1014

	Detalj	Art.nr.
7	Wire	XWL1008
8	Bolt M10x20	BU1201/ BU1200
9	Nut M10	MU1001/ MU1010
10	Rubber washer Ø50 mm M10	GB5010
11	Infosign APP	IS1810

The maximum separation between supports is 10 m up to 15 degrees pitch.
Between 15-50 degrees gradient, the max. separation is 2.5m.
Above 50 degrees gradient, the max. separation is 1.2 m.

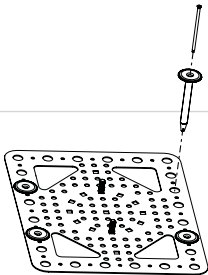


1. Fold Wire bracket

Fold the bracket (2) together by hand as illustrated above.

NB: Bend only once. If this is bent several times, it will be damaged and must be replaced.

For mechanical fitting of attachment plate, see MA1008



	Detalj	Art.nr.
3	Wire runner open	WL1010
7	Wire	XWL1008

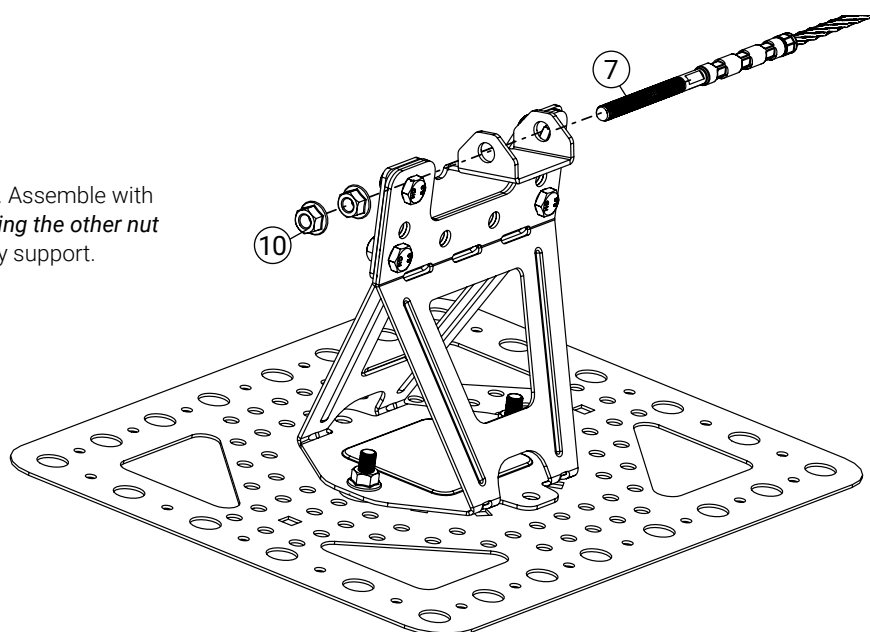
	Detalj	Art.nr.
10	Nut M10	MU1001/ MU1010

2. Installation of end bracket and wire

Start with one end bracket and continue with the wire supports. Pull the wire through, leaving a little slack. Then mark where the last bracket (the end bracket) is to be installed.

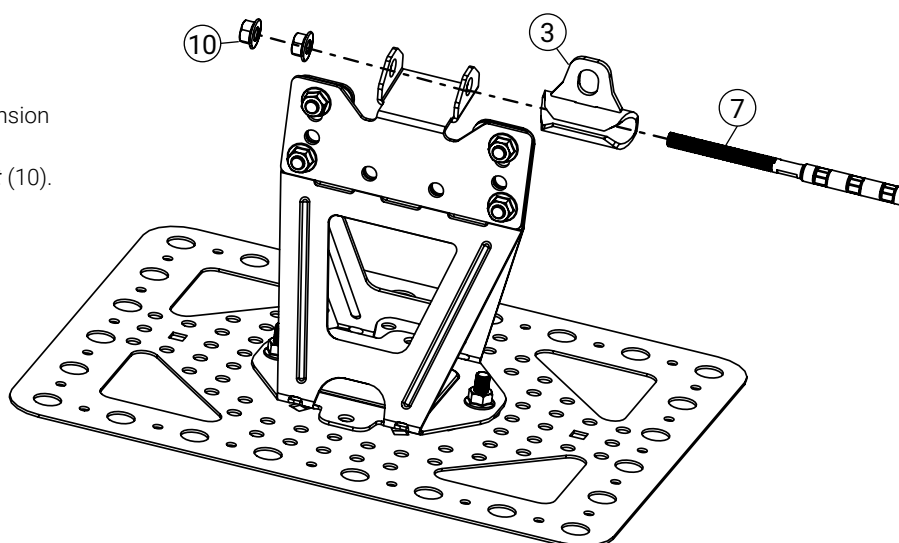
Install the first wire terminal

Install the first wire terminal (7). Assemble with two nuts (10) **Secure by tightening the other nut (10)**. Route the wire through any support.



Install the last wire terminal

Install the last wire terminal (7). Thread on any wire runner (3). Tension the wire so it does not sag. **Secure by tightening the other nut (10)**.



Wire System – Weline on sealing membrane

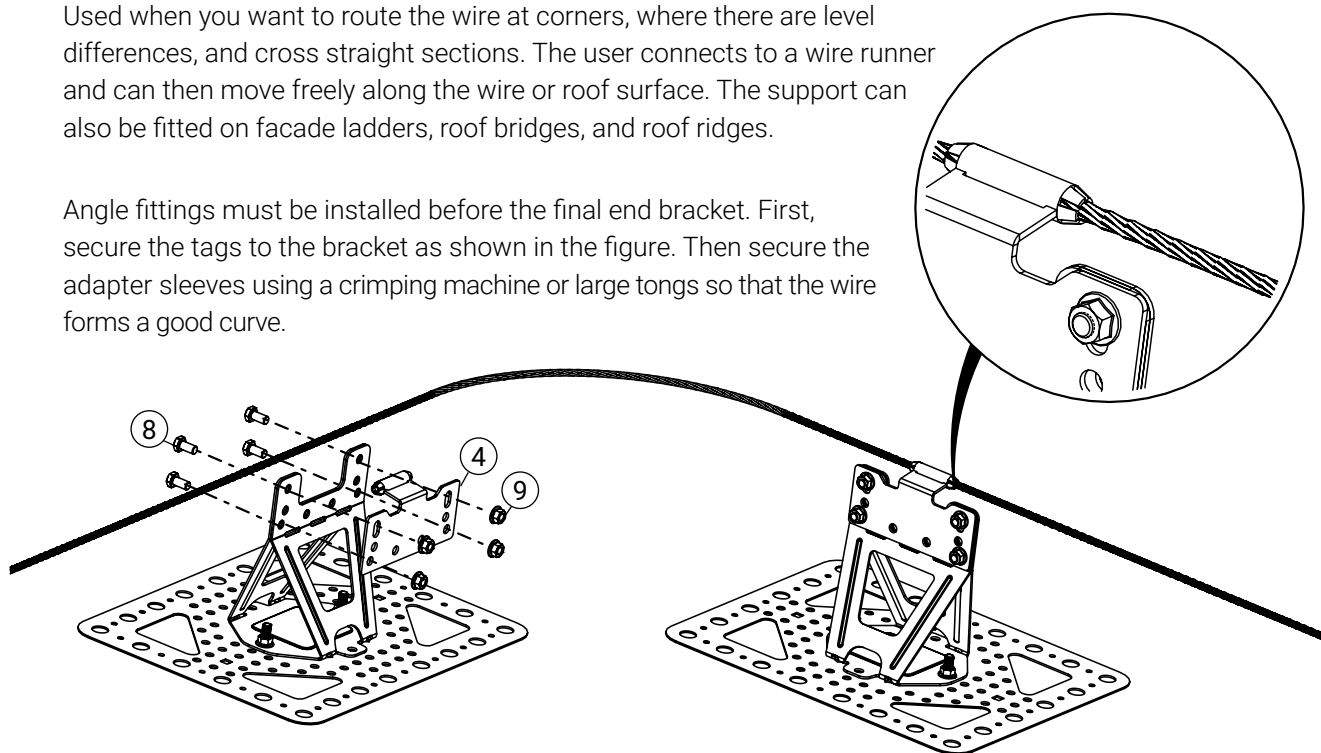
	Detalj	Art.nr.
4	Wire bracket tube	WL1012
6	Wire clamping sleeve	XWL1014

	Detalj	Art.nr.
8	Bolt M10x20	BU1201/ BU1200
9	Nut M10	MU1001/ MU1010

Wire Support Tube

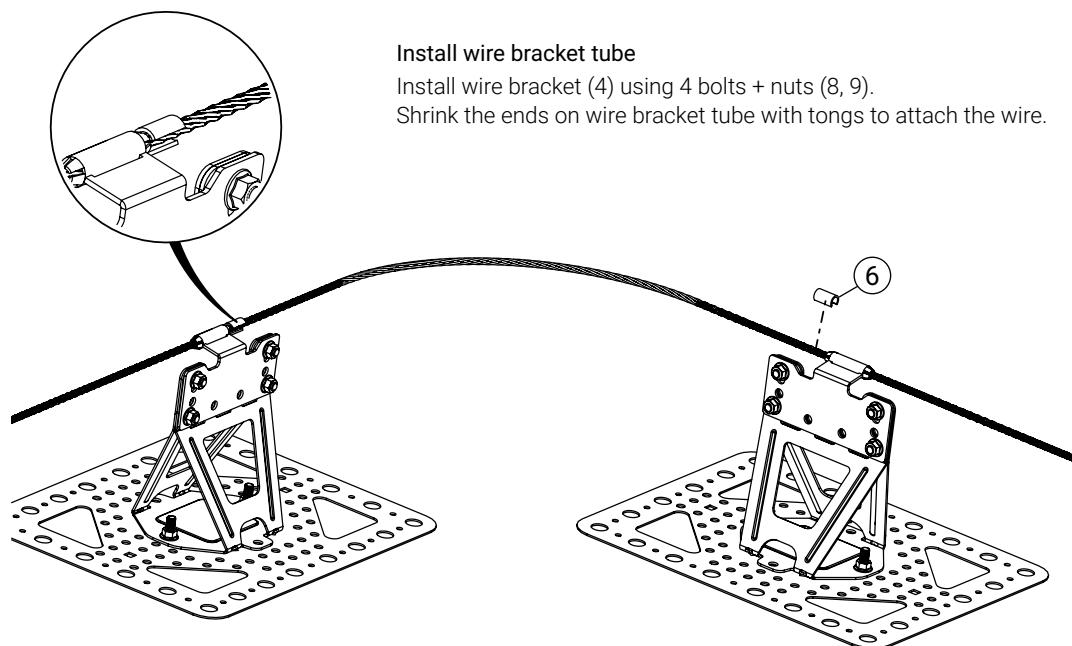
Used when you want to route the wire at corners, where there are level differences, and cross straight sections. The user connects to a wire runner and can then move freely along the wire or roof surface. The support can also be fitted on facade ladders, roof bridges, and roof ridges.

Angle fittings must be installed before the final end bracket. First, secure the tags to the bracket as shown in the figure. Then secure the adapter sleeves using a crimping machine or large tongs so that the wire forms a good curve.



Install wire bracket tube

Install wire bracket (4) using 4 bolts + nuts (8, 9). Shrink the ends on wire bracket tube with tongs to attach the wire.

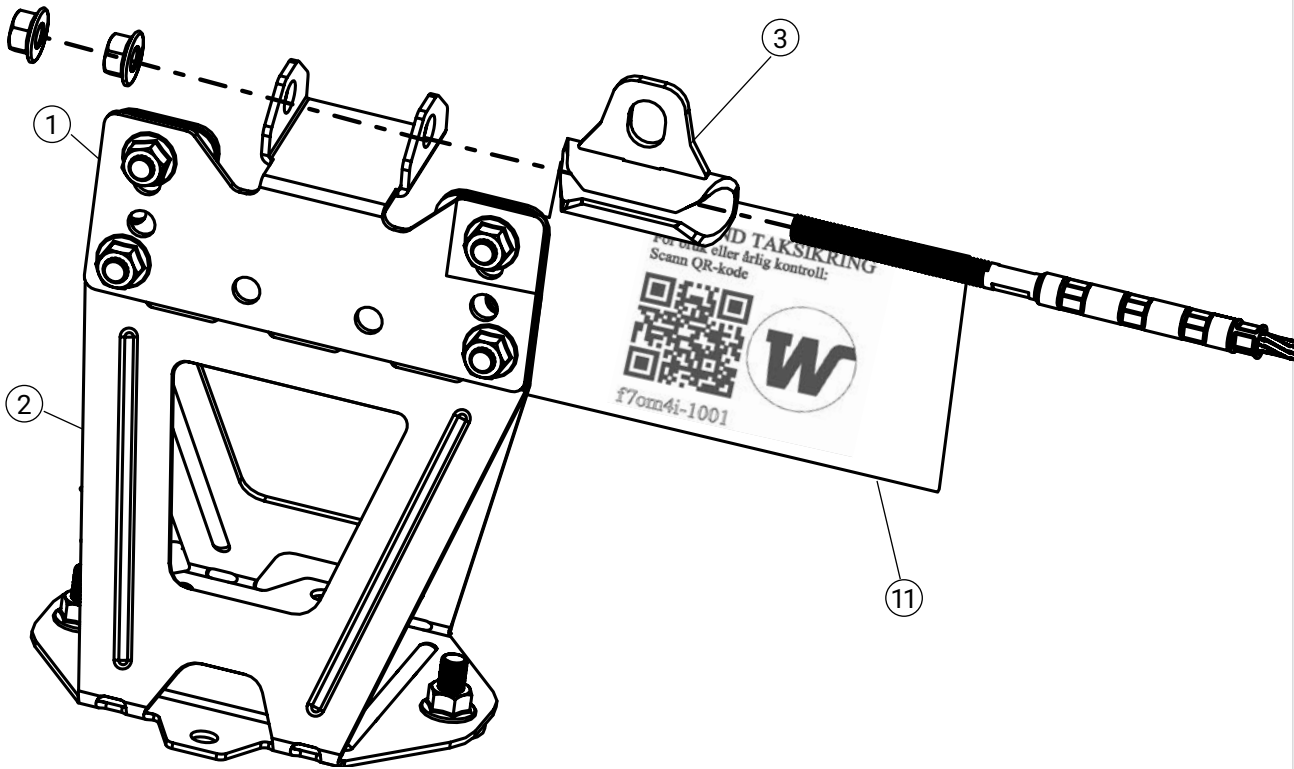


Wire clamping sleeve

The sleeves (6) are pressed against the bracket, so the wire keeps its shape. Make the pinch using a press or with large tongs..

	Detalj	Art.nr.
1	End bracket wire	WL1002
2	Bracket plain roof	WL1020

	Detalj	Art.nr.
3	Wire runner open	WL1010
11	Infosign APP	IS1810



Fold WL1020 (2) Install Info Sign App (11) at the same time as End Bracket WL1002 (1) as shown in the figure.