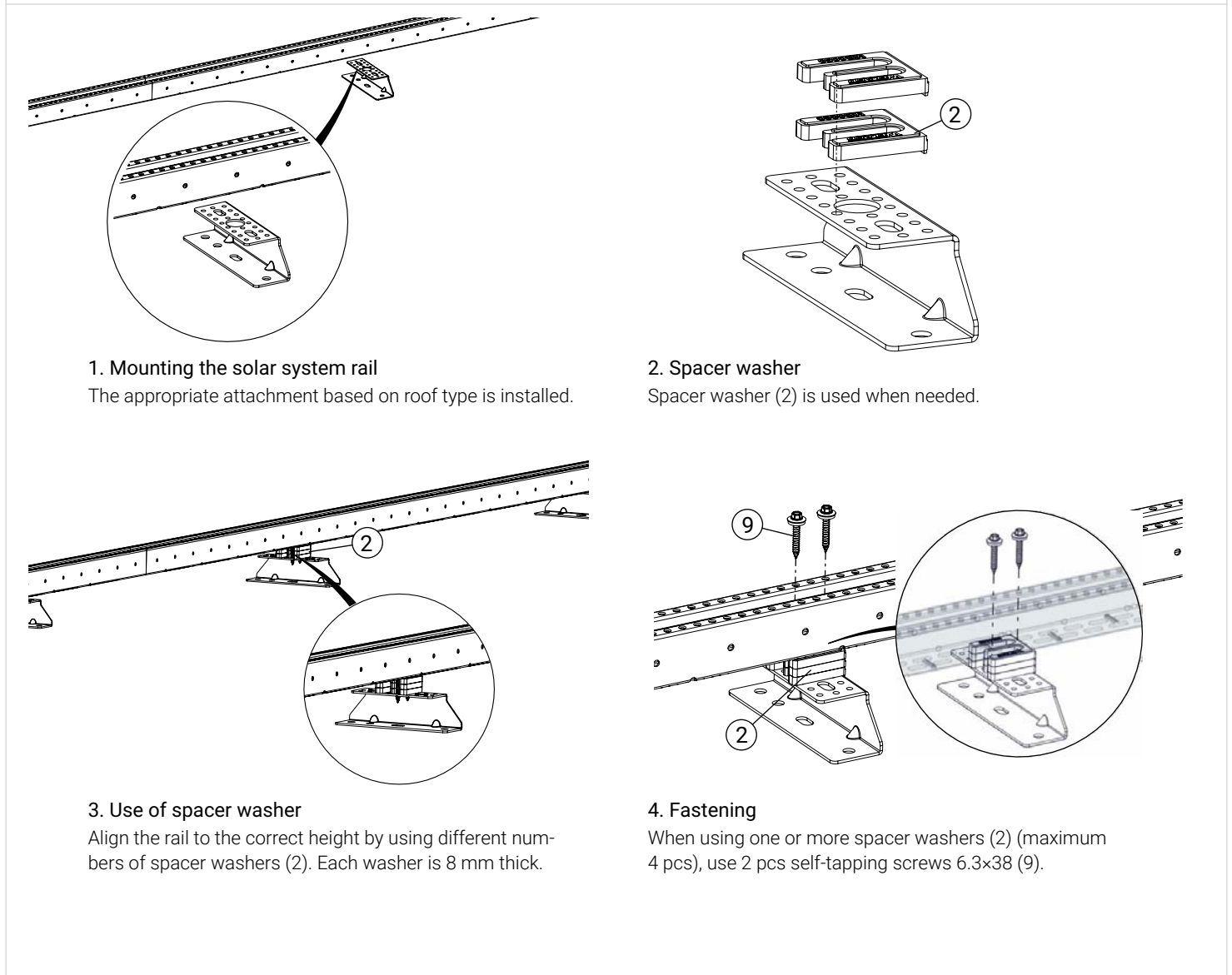
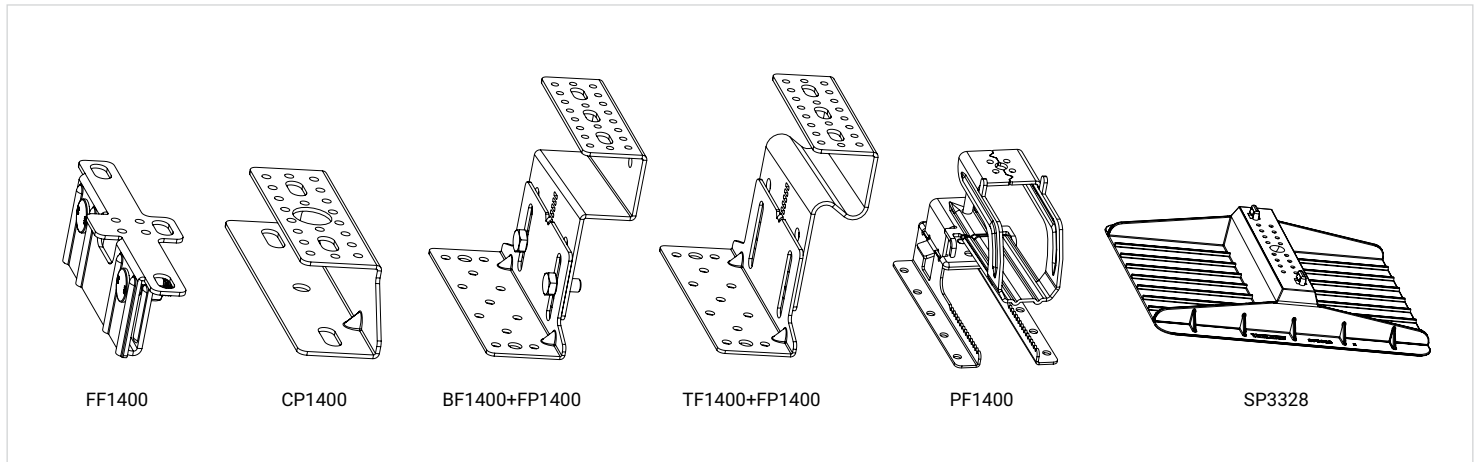


| Part | Part no. |
|----------------------------------|---------------|
| 1 Solar system rail | IS2450 |
| 2 Spacer washers, 50-pack | MB5050 |
| 3 Standing seam clamp | FF1400 |
| 4 C-profile | CP1400 |
| 5 Bracket for concrete/clay tile | BF1400/TF1400 |

| Part | Part no. |
|-----------------------------|---------------|
| 6 Base plate | FP1400 |
| 7 Tile bracket | PF1400 |
| 8 Support plate | SP3328 |
| 9 Self-tapping screw 6.3x38 | SS6338/SS6380 |



1. Mounting the solar system rail

The appropriate attachment based on roof type is installed.

2. Spacer washer

Spacer washer (2) is used when needed.

3. Use of spacer washer

Align the rail to the correct height by using different numbers of spacer washers (2). Each washer is 8 mm thick.

4. Fastening

When using one or more spacer washers (2) (maximum 4 pcs), use 2 pcs self-tapping screws 6.3x38 (9).