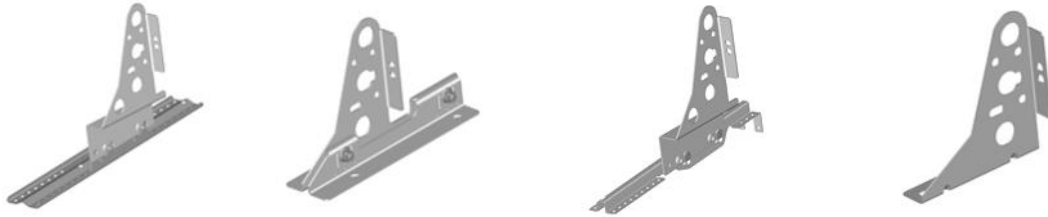
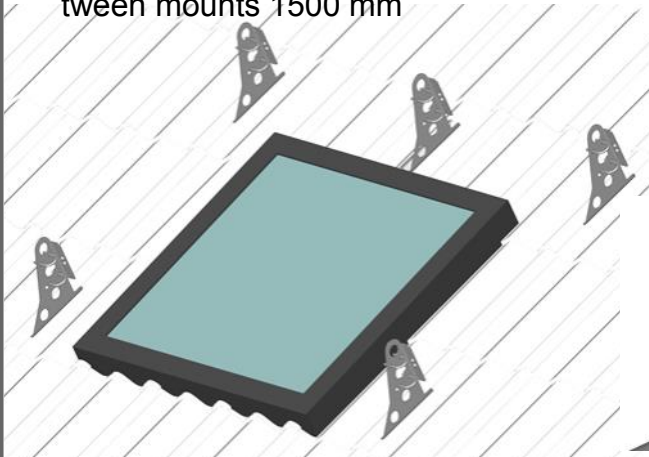


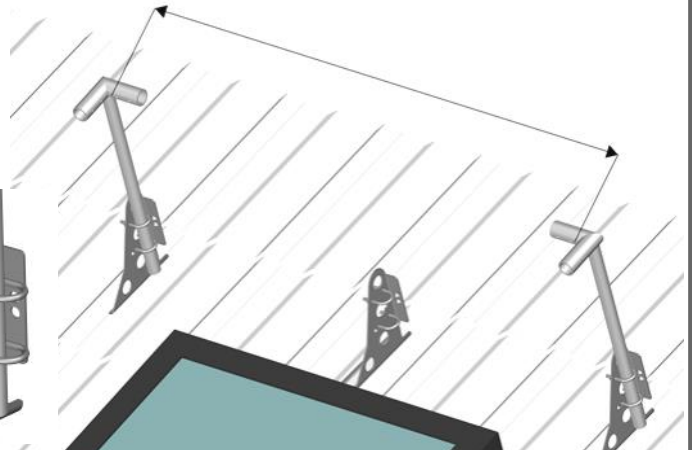
The guardrail is installed by roof hatches, roof windows, lanterns and so on.



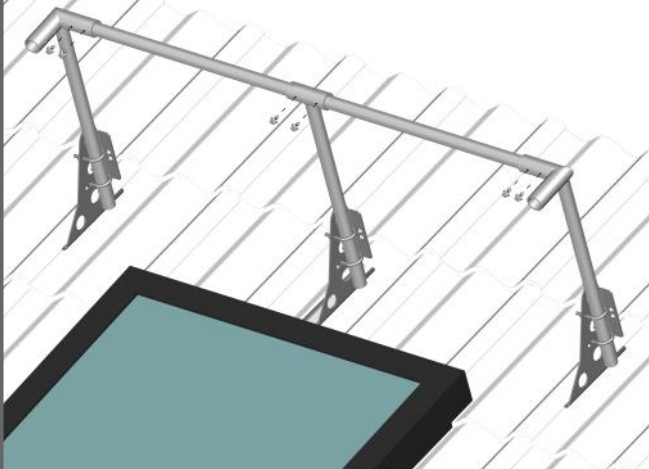
Install the mount according to the accompanying assembly instructions. Max. distance between mounts 1500 mm



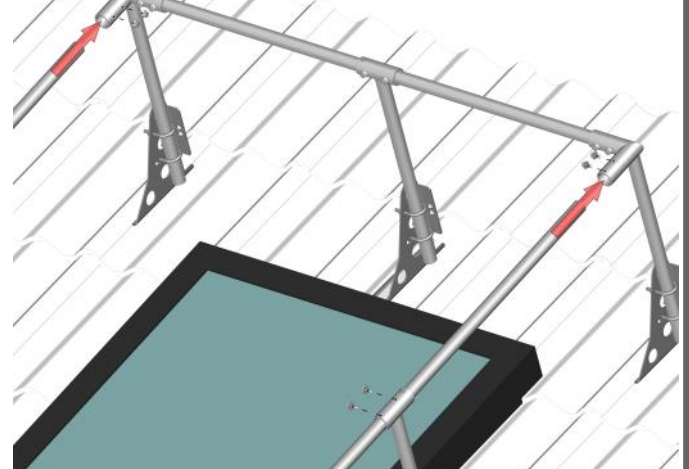
Place the brackets around the window/hatch. If the distance between the brackets is more than 1200 mm, a centre baluster must be used.



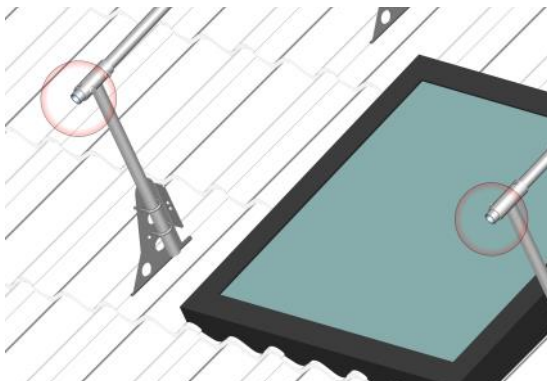
Assemble the corner balusters using 2 U-fittings + nuts. Measure the length of the tube, and cut.



Assemble the tube in the sleeves and secure using 2 5.5x22 self-drilling screws/post.



Assemble the end balusters and push the tube through the sleeves and secure using 2 5.5x22 self-screwing screws/post.



Cut the tubes at the end balusters.

